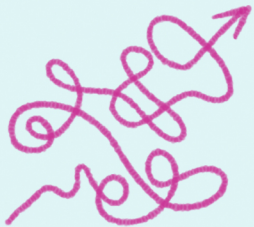


Designing the perfect multiple-choice test

Structure of the question



AVOID:

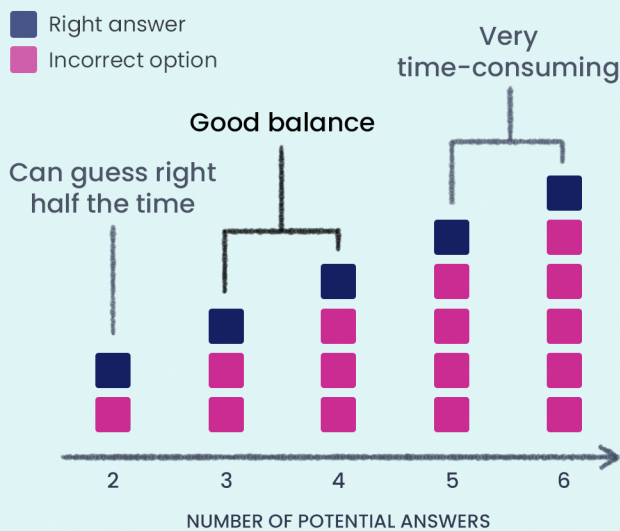
Complex questions lead to misunderstandings and students just guess the answer.



DO:

Simple and clear questions maximise the chance of targeted retrieval practice.

Number of potential answers



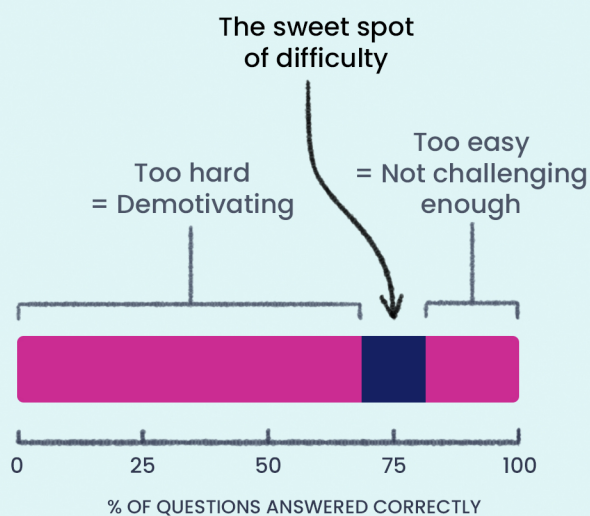
Avoid really easy answers

Which is the hexagon?



Really easy answer options are pointless filler.

Aim for 70–80% success



Avoid using “None of the above”

What makes a good multiple-choice question?

- Complex questions
- Many potential answers
- One really easy answer
- None of the above

If “None of the above” is the right answer, students have been exposed to wrong answers and don’t get to retrieve the correct answer.