

UPVC foul drainage pipe connected into New manhole as shown on drawing no 9121/01.

100mm diameter UPVC foul drainage pipe laid to fall and adequately bedded in accordance with Paragraph 2.6 and Diagram 4" within Technical Booklet N of the Building Regulations for Northern Ireland 1990.

Sigmarite Multicolour paint finish to be applied to all wall surfaces within sanitary accommodation. Colour to be chosen by architect.

Xpelair wall grille for use with extractor fan.

Form new opening in existing cavity wall for horizontal duct outlet from extractor fan within Wheelchair WC Compartment.

Include for removal of existing tiled terrazzo floor finish within new wheelchair WC compartment. Insert new sand/cement floor screed to adjacent floor level and supply and fit new slip resistant "polyflor" continuous sheet vinyl, with covered skirting.

Include for provision of 3 No New Double Panel radiators, one for each individual compartment with approximate outputs as follows; (Hison Radiators) Wheelchair WC Compartment - 500 watts. Female Staff Toilet - 1200 watts. Ambulant Disabled Toilet - 700 watts.

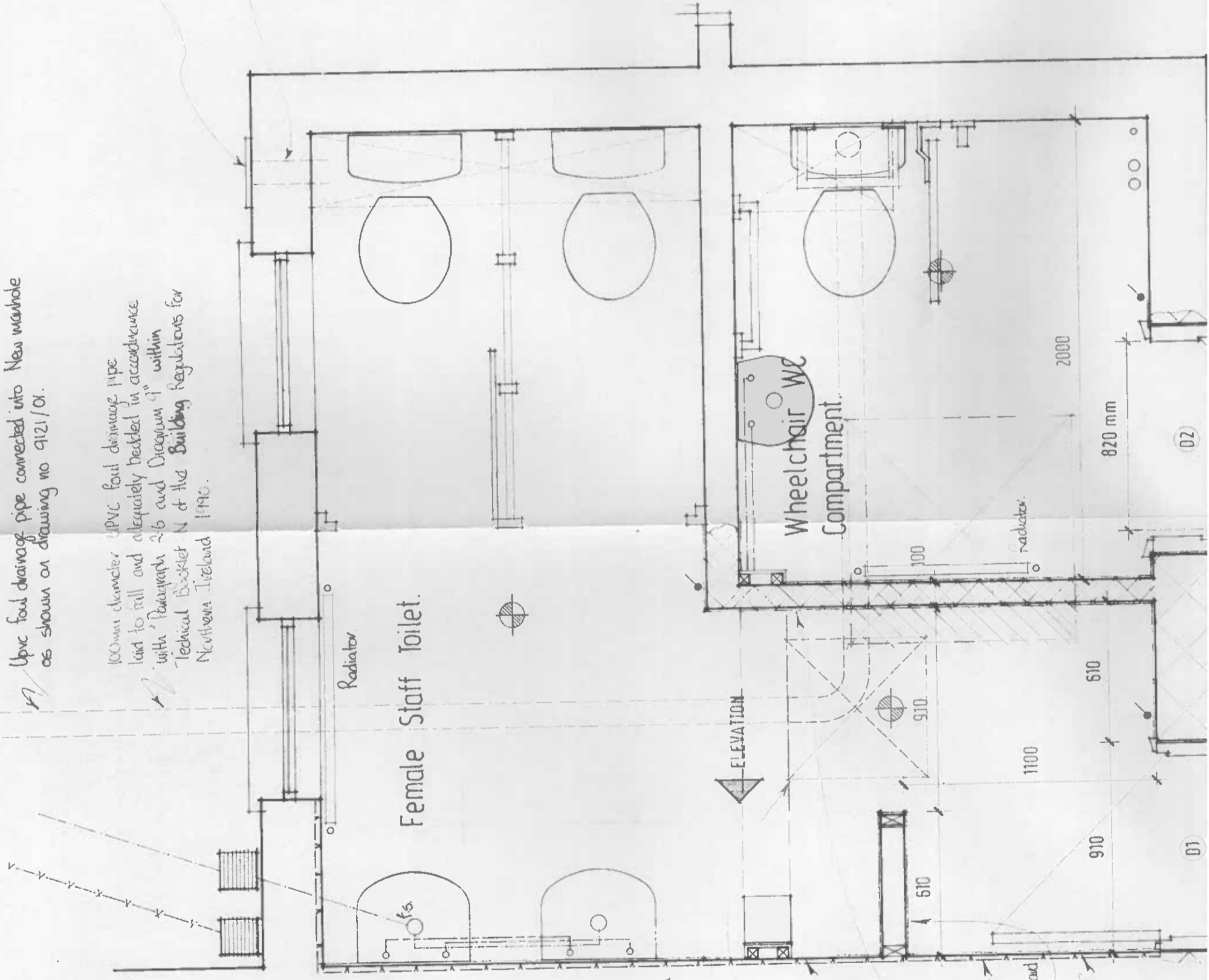
Include for removal of existing terrazzo tiled floor finish including, in-situ covered skirting where necessary within new female staff toilet, area not exceeding 1.250 m wide x 3.000m long to allow for new foul drainage pipe to be inserted and new underfloor manhole to be constructed. Completely remove existing tiled terrazzo floor finish including in-situ covered skirting within new WC Compartment.

Wheelchair WC Compartment Suite to be Tynforde's Axton Doc M Suite, including all necessary fittings.

Xpelair GMF 170 Ceiling mounted duct fan securely fixed into high level timber framed duct above WC, concealing flexible duct extracting air to outside through adjacent sanitary accommodation.

Completely remove paintwork of existing heating and re-paint to architect's specification.

Block off part of existing roof light opening in ceiling



Provide and insert new back inlet gully trap complete with New 100mm dia UPVC underground foul drainage pipe laid to fall, properly bedded and inserted into New manhole.

Include for removal of existing gully trap including underground drainage pipe into existing manhole and provide new gully trap including 100mm Ø UPVC underground drainage pipe, laid to fall, properly bedded and inserted into new manhole.

32mm dia waste pipe from washhand basins laid to fall and inserted into back inlet gully trap.

Tynforde's Sola 510, Wall Mounted, Wash hand basins complete with Aztec taps.

2 New Row high, glazed ceramic wall tiles above Wash hand basins.

Provide Mirror above New Wash hand basins.

Construct new manhole upon reinforced concrete slab foundation, internal dimensions 450 x 450mm (minimum) with "Eccles" Thimble light duty recessed access cover, incorporating seal. Ref No; 1341 B.

Heatrae Sadia, 'No Touch' Hand & Face drier. Product Code 45:020:080.

Erect new 100mm thick lightweight concrete block wall supported upon concrete floor beam to architect's detail.

Remove existing Wash hand basins, including all associated fixtures, waste pipes and hot and cold water supply pipework.

Expanded metal lath to be fixed to plasterboard prior to plastering. Carefully Remove existing ceramic wall tiling.

Remove existing paper towel dispensers.

Partially block up existing rooflight in timber