

Teacher workforce statistics in grant-aided schools in Northern Ireland, 2025/26

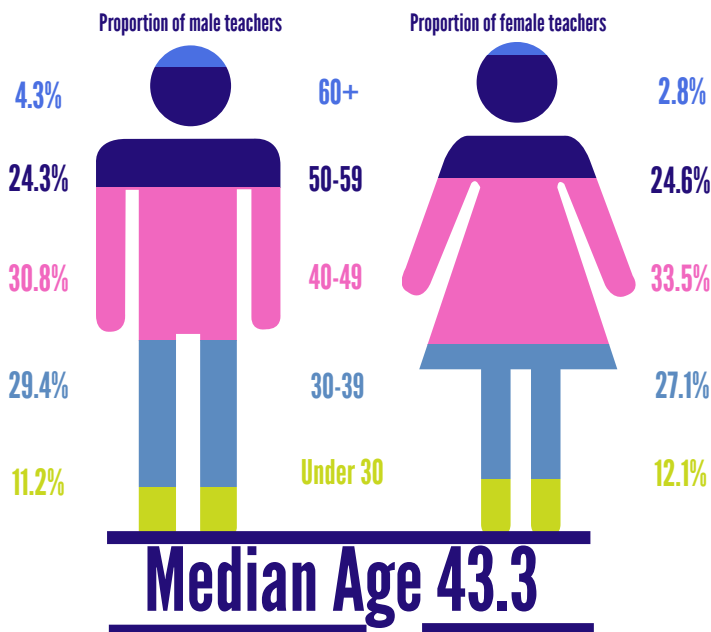
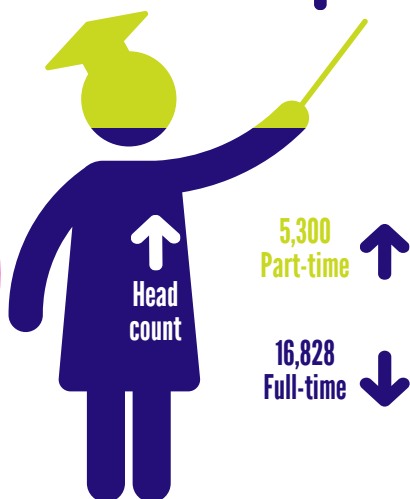
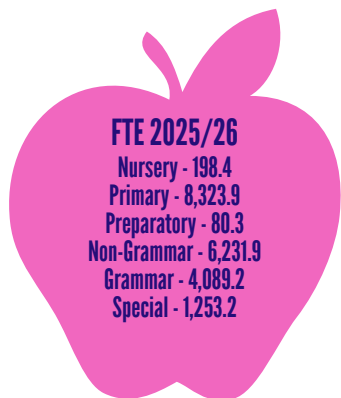
Number and age of teachers

Change from last years



20,177 full-time equivalent teachers ↑

22,128 total teacher headcount ↑



Gender of teachers, Principals and Vice Principals

Proportion of teachers that are female



Across all schools..

- 60.8%** of Principals, and **65.3%** of Vice Principals are female
- In Nursery, primary and preparatory schools, **62.8%** of Principals are female
- In all post primary schools, **50.8%** of Principals are female
- In Special schools, **64.3%** of Principal are female

Pupil: Teacher Ratios

Overall PTR in 2025/26 is 17.1

