

STATISTICAL PRESS RELEASE

SCHOOL MEALS IN NORTHERN IRELAND 2011/12

The purpose of this statistical release is to provide results of the latest annual data collection relating to the uptake of school meals in Northern Ireland schools, commonly known as the School Meals census. The information was collected in October 2011 for all grant-aided schools in Northern Ireland.

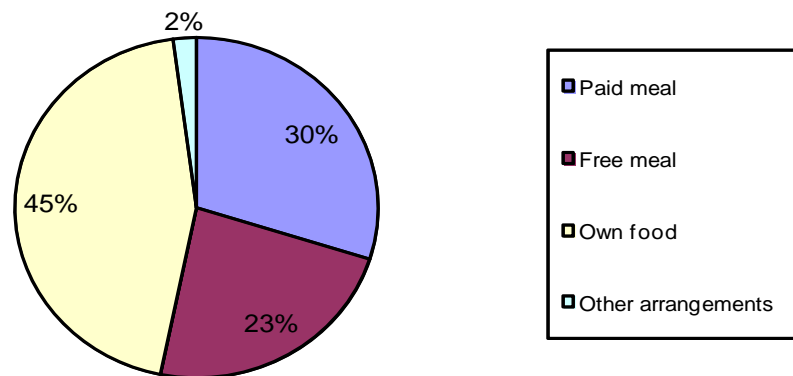
Data collected through the School Meals census are used by policy branches within the Department of Education and by other users across the education service, most notably by the Education and Library Boards (ELBs). The data are also used to inform a number of Assembly questions. The Department is responsible for formulating and developing policy and the associated financial arrangements in relation to school meals.

Key Findings from the 2011 School Meals census are:

School meals (free or paid for)

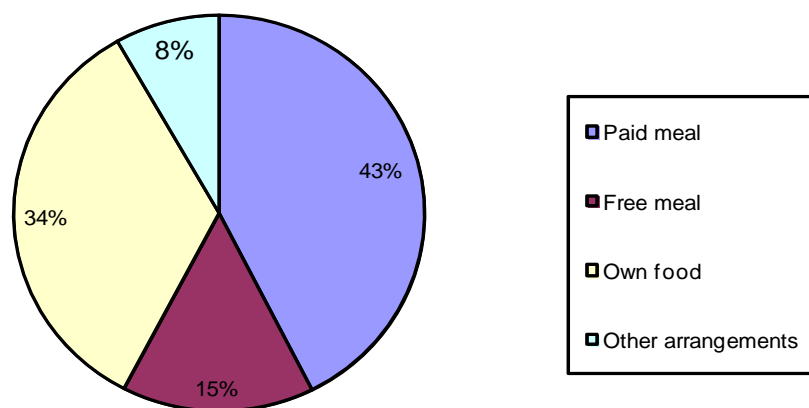
- Of those pupils present on the census day, 55.5% (166,620) took a meal supplied by the school (Tables 1 and 2). This is an increase of 6,415 on 2010/11 due to an increase in those taking free school meals from 50,869 to 57,802 (Tables 4 and 12).
- 58.8% of the pupils who were present on the census day took a meal (paid or free) in nursery schools, 53.2% in primary/prep schools, 57.7% in post-primary schools and 68.8% in special schools (Table 2).

Figure 1a: Type of meals taken by pupils in primary¹ schools and preparatory departments, 2011

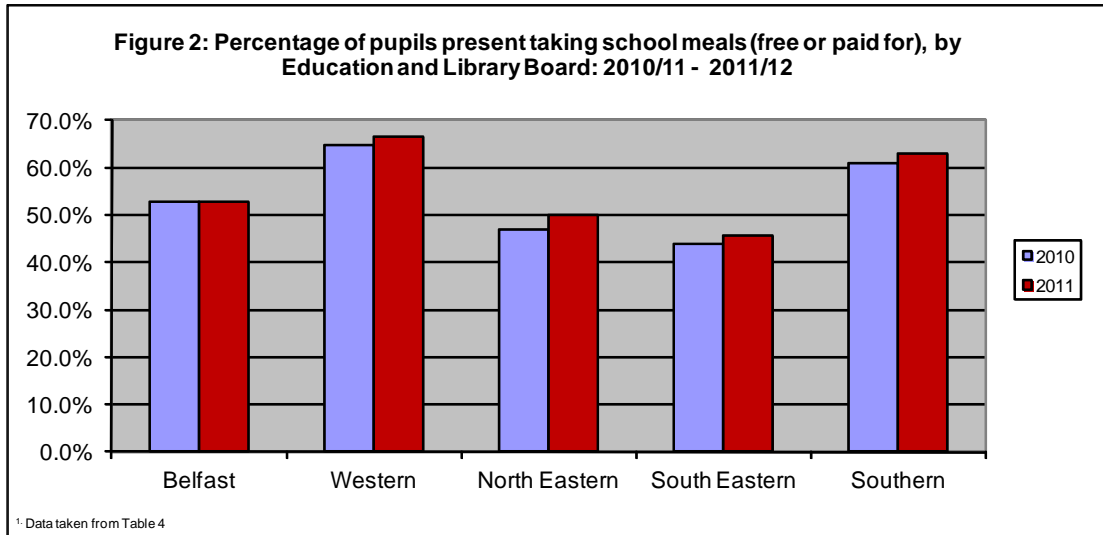


¹ Includes pupils in reception and nursery classes

Figure 1b: Type of meals taken by pupils in post-primary schools, 2011



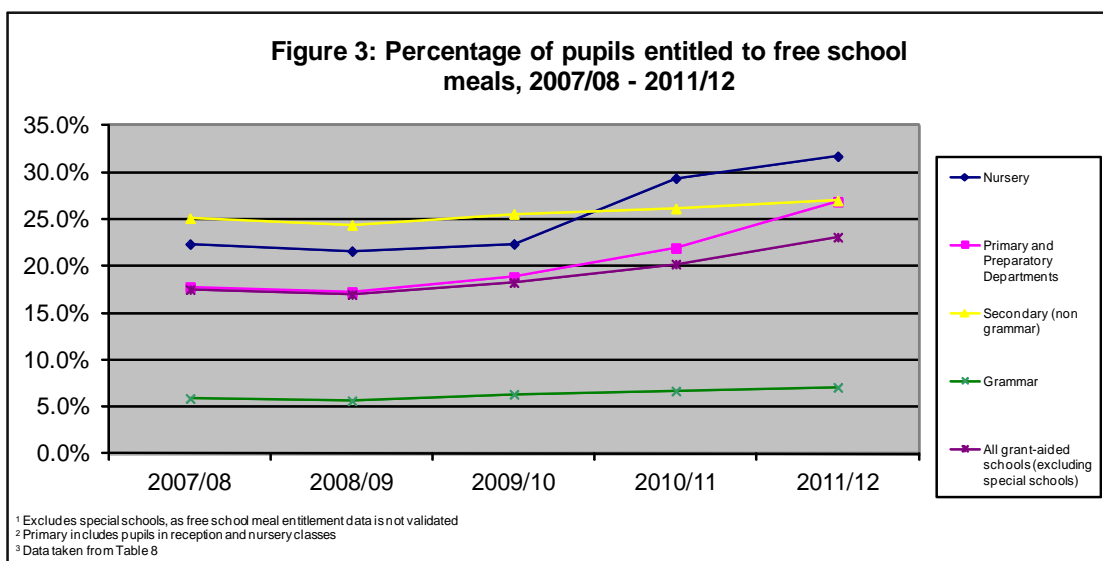
- The percentage of pupils taking school meals was highest in the Western Education and Library Board area (66.5%) and lowest in the South Eastern Education and Library Board (45.7%) (Table 4).



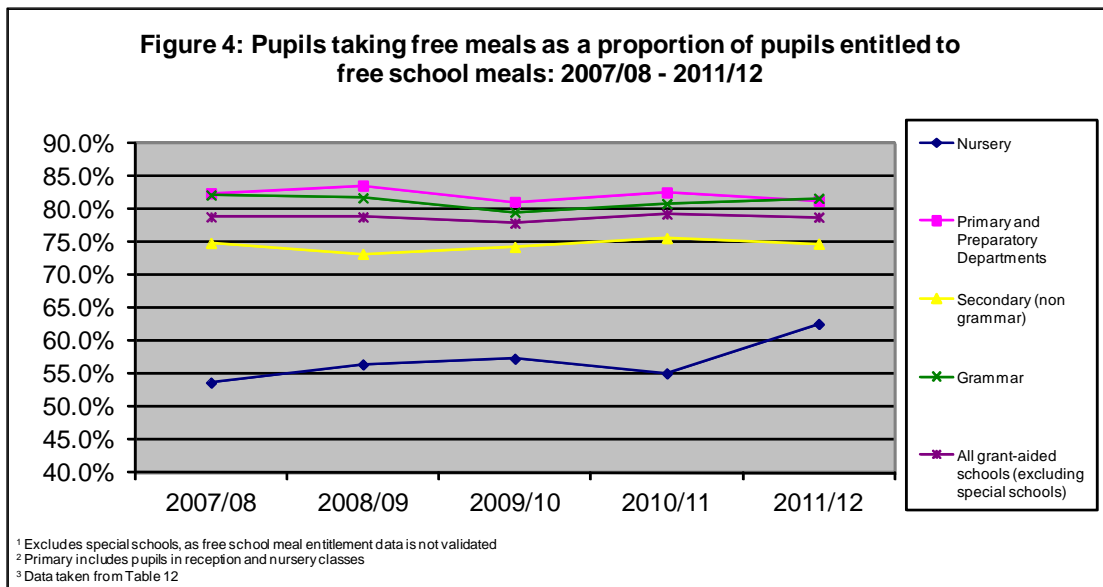
- Overall uptake of school meals in schools here is higher than that in Scotland or England (Table 7).

Free school meals

- Across all sectors (excluding special schools) 73,314 pupils (23.1% of the total school roll) were entitled to free school meals – an increase of 9,175 (14.3%) on the previous year (Table 8).
- The Primary/Prep sector showed the highest increase in the percentage of pupils entitled to free school meals compared to the previous year. This is most likely due to the extension of the eligibility criteria for free school meal entitlement which was introduced in 2010/11 and further extended in 2011/12 to include Key Stage 2 pupils.



- Of those pupils taking a school meal on the census day, 35.8% took a free school meal supplied by the school (Table 11). The percentage of pupils taking a free school meal was highest in the Belfast Education and Library Board area (50.7%) and lowest in the Southern Education and Library Board area (28.1%).
- When considering the number of pupils taking free school meals as a proportion of the number of pupils entitled to free school meals, uptake of free school meals was 78.8%¹ (Table 12).



- Uptake of free school meals was highest in the Western Education and Library Board area (85.2%) and lowest in the South Eastern Education and Library Board area (71.7%) (Table 13).

¹. Excludes special schools. Data on pupils entitled to free schools meals in special schools is not validated.

LIST OF TABLES AND CHARTS

General overview	Table 1	Number and type of meal taken by pupils on census day, by school type and school management type: 2011/12
	Table 2	Percentage of meals taken by pupils on census day, by school type and school management type: 2011/12
	Figure 1a	Type of meal taken by pupils in primary schools and preparatory departments, 2011/12
	Figure 1b	Type of meals taken by pupils in post-primary schools, 2011/12
Pupils taking school meals (free or paid for)	Table 3	Number and percentage of pupils present and taking school meals (free or paid for) by Education and Library Board, school type and school management type: 2011/12
	Table 4	Pupils present and taking school meals (free or paid for) by Education and Library Board: 2010/11- 2011/12
	Table 5	Percentage of pupils taking school meals (free or paid for) by type of meal provision, school type and school management type: 2011/12
	Table 6	Number of pupils taking school meals (free or paid for) by type of meal provision, Education and Library Board, school type and school management type: 2011/12
	Table 7	Percentage of pupils present on census day taking school meals in Northern Ireland, England and Scotland
	Figure 2	Percentage of pupils present taking school meals (free or paid for): 2011/12
Free school meals	Table 8	Percentage of pupils entitled to free school meals by school type: 2007/08 – 2011/12
	Table 9	Number of pupils entitled to free school meals by school type and school management type: 2007/08 - 2011/12
	Table 10	Number and percentage of pupils entitled to free school meals by Education and Library Board, school type and school management type: 2011/12
	Table 11	Number and percentage of pupils taking free school meals as a proportion of all school meals taken by Education and Library Board, school type and school management type: 2011/12
	Table 12	Number of pupils taking free school meals as a proportion of pupils entitled to free school meals by school type: 2007/08 – 2011/12

- Table 13 Number and percentage of pupils taking free school meals as a proportion of pupils entitled to free school meals by Education and Library Board, school type and school management type: 2011/12
- Figure 3 Percentage of pupils entitled to free school meals, 2007/08 – 2011/12
- Figure 4 Pupils taking free meals as a proportion of pupils entitled to free school meals: 2007/08 – 2011/12

Pupils not taking school meals	Table 14	Number of pupils taking own food or making other lunch arrangements by Education and Library Board, school type and school management type: 2011/12
---------------------------------------	----------	---

Adults taking school meals	Table 15	Adults taking school meals by Education and Library Board and school type: 2011/12
-----------------------------------	----------	--

BACKGROUND NOTES

Official Statistics

1. This is an Official Statistics publication. Official statistics are produced to high professional standards set out in the Code of Practice for Official Statistics. They undergo regular quality assurance reviews to ensure that they meet customer needs. They are produced free from any political interference.
2. For general enquiries about the Code of Practice for Official Statistics, contact the National Statistics Public Enquiry Service on 0845 601 3034
minicom: 01633 812399
E-mail: info@statistics.gov.uk
Fax: 01633 652747
Letters: Customer Contact Centre, Room 1.015, Office for National Statistics, Cardiff Road, Newport, NP10 8XG
3. You can also find Official Statistics on the Internet: www.statistics.gov.uk

School meal provision

4. The Education and Library Boards (ELBs) are responsible for the day to day operation of the school meals service in all grant-aided schools, with the exception of voluntary grammar schools and grant-maintained integrated schools, where the responsibility lies with the Trustees/Boards of Governors.
5. The service is provided in line with the Approved Arrangements for the Provision of Milk, Meals and Related Facilities made under Articles 58 and 59 of the Education and Libraries (NI) Order 1986 drawn up by the Department of Education (DE).
(http://www.deni.gov.uk/index/85-schools/5-schools_meals.htm)
6. Two main types of school meal service exist:
 - A traditional meal comprising a main course and dessert; and
 - A cash cafeteria service, where items are priced separately.

Free school meal provision

7. With regard to free school meal provision the following terms are used:
 - Eligibility: When a pupil within a family meets one of the criteria contained in paragraph 6 of the Arrangements for the provision of milk, meals and related facilities.
 - Entitlement: When a pupil makes an application for free school meals and is accepted.
 - Uptake: When a pupil who is entitled to free school meals makes use of the free school meal provision.

8. Certain categories of pupils are entitled to free school meals. Details of the qualifying criteria are contained in paragraph 6 of the Arrangements. The ELBs are responsible for administering the award of free school meals. Entitlement to free school meals is widely used as an indicator of deprivation.
9. From the start of the 2010/11 school year the eligibility criteria for free school meals was extended to include full-time nursery and primary school children whose parents are in receipt of Working Tax Credit and have an annual taxable income which does not exceed £16,190 (in 2010/11). The new criterion was introduced on a phased basis with nursery, Foundation Stage and Key Stage 1 pupils eligible from September 2010. This was extended in September 2011 to Key Stage 2 pupils.

School Meals Census

10. The main statistics in this press release have been derived from the annual school meals data collection, commonly known as the School Meals census. ELBs are responsible for the collection of data in relation to schools in the controlled and maintained sectors and provide a collated return for their area to the Department; from 2011/12, this was provided to the Department at individual school level. Individual returns are submitted by each Voluntary Grammar School and Grant-Maintained Integrated School directly to the Department.
11. The 2011/12 figures in this press release are based on information as at 7th October 2011. They may be subject to minor revision and these will be notified in accordance with our revisions policy. This can be accessed at http://www.deni.gov.uk/de_statement_on_statistical_revisions-2.doc
12. Some tables in this press release include data on school enrolments and the number of pupils entitled to free school meals. Data on school enrolments and free school meal entitlement (FSME) were collected as part of the annual school enrolments data collection exercise and are also based on information as at 7th October 2011. FSME entitlement data is not presented for Special schools as validated data is not available.
13. There were 19 schools in which no pupils took a school meal, as these schools do not provide a school meals service. The number of pupils at these schools are included in the tables in the Press Release.
14. There were 132 nursery pupils who were recorded as being present on census day but were not recorded on returns as taking a meal/lunch/making other arrangements. This consisted of 2 Nursery schools and 1 Primary school.
15. Figures for primary schools may include nursery and/or reception pupils attending primary schools and preparatory departments.

16. More detail about the collection of data on school meals can be found on the DE website. This can be accessed at http://www.deni.gov.uk/school_meals_procedures.pdf
17. The Statistics and Research section of the DE website (www.deni.gov.uk) also presents data from the School Meals census, summarised at Northern Ireland and Education and Library Board level. Statistics on enrolments, participation rates, pupil:teacher ratios, school leaver destinations and qualifications may also be accessed via the website.

General

18. The following symbols are used in the tables in this Press Release:

- * = Relates to fewer than 5 cases
- # = Number suppressed to prevent disclosure of small numbers elsewhere.
- = Indicates no schools in this category

Comparative Data

19. The following publications provided the comparative statistics used in Table 7:

- England: Take up of school lunches in England 2010-2011
<http://www.schoolfoodtrust.org.uk/school-cooks-caterers/reports/statistical-release-take-up-of-school-lunches-in-england-2010-2011>
- Scotland: Summary statistics for attainment, leaver destinations and school meals, No. 1: 2011 Edition, June 2011
<http://www.scotland.gov.uk/Publications/2011/06/24142721/0>

Further enquiries

20. For more details about the statistics contained in this Press Release, or to request further information and analysis, please contact:

Jennifer McCrea
Statistics and Research Branch
Department of Education
Rathgael House
Balloo Road
Rathgill
BANGOR BT19 7PR
Tel. 028 9127 9638
Fax 028 9127 9594
Email statistics@deni.gov.uk

21. DE Statistical Press Releases can be accessed on the DE website (www.deni.gov.uk) under the Statistics and Research section.
22. Press enquiries should be made to the Department's Press Office at the same address, telephone (028) 9127 9268 / fax (028) 9127 9271.
23. Feedback on this publication can be provided directly to Jennifer McCrea (contact details above) or via the feedback questionnaire on our website. <http://www.deni.gov.uk/feedback-pg.htm>

TABLE 1: NUMBER AND TYPE OF MEALS TAKEN BY PUPILS ON CENSUS DAY, BY SCHOOL TYPE AND SCHOOL MANAGEMENT TYPE: 2011/12

School Type	Management Type	School Meals			Not Taking School Meals		Total
		Pupils paying for school meal	Pupils taking free school meal	All pupils taking school meal	Pupils taking own food	Pupils making other lunch arrangements	
Nursery ¹	Controlled	1207	634	1841	26	1575	3442
	RC Maintained	585	540	1125	112	366	1603
	TOTAL	1792	1174	2966	138	1941	5045
Primary ^{1,2} and Preparatory Departments	Controlled	20689	14006	34695	34074	2316	71085
	Voluntary	1162	12	1174	514	0	1688
	RC Maintained	21914	19343	41257	29020	671	70948
	Other Maintained	496	915	1411	1011	49	2471
	Controlled Integrated	648	684	1332	1755	68	3155
	Grant Maintained Integrated	1282	1057	2339	2778	82	5199
	TOTAL	46191	36017	82208	69152	3186	154546
Secondary (non grammar)	Controlled	10815	4600	15415	9082	3043	27540
	RC Maintained	13566	10126	23692	9670	3495	36857
	Other Maintained	121	144	265	204	0	469
	Controlled Integrated	426	361	787	911	764	2462
	Grant Maintained Integrated	4341	1767	6108	2351	123	8582
TOTAL	29269	16998	46267	22218	7425	75910	
Grammar	Controlled	6468	623	7091	6029	1393	14513
	Voluntary	22222	2990	25212	18198	2410	45820
TOTAL	28690	3613	32303	24227	3803	60333	
Post-Primary Total		57959	20611	78570	46445	11228	136243
Special	Controlled	1033	1663	2696	1080	195	3971
	RC Maintained	12	136	148	19	0	167
	Other Maintained	9	23	32	9	0	41
	TOTAL	1054	1822	2876	1108	195	4179
All grant-aided schools	Controlled	40212	21526	61738	50291	8522	120551
	Voluntary	23384	3002	26386	18712	2410	47508
	RC Maintained	36077	30145	66222	38821	4532	109575
	Other Maintained	626	1082	1708	1224	49	2981
	Controlled Integrated	1074	1045	2119	2666	832	5617
	Grant Maintained Integrated	5623	2824	8447	5129	205	13781
	GRAND TOTAL	106996	59624	166620	116843	16550	300013

Source: Education & Library Boards and an annual survey; NI School Meals Census 2011/12 in voluntary grammar and grant maintained integrated schools.

Notes:

¹ 132 nursery pupils recorded as being present on census day were not recorded on returns as taking a meal/lunch/making other arrangements (2 Nursery Schools and 1 Primary School)

² includes pupils in reception and nursery classes of Primary schools

TABLE 2: PERCENTAGE OF MEALS TAKEN BY PUPILS ON CENSUS DAY, BY SCHOOL TYPE AND SCHOOL MANAGEMENT TYPE: 2011/12

School Type	Management Type	School Meals			Not Taking School Meals		Total
		Pupils paying for school meals %	Pupils taking free school meals %	All pupils taking school meal %	Pupils taking own food %	Pupils making other lunch arrangements %	
Nursery ¹	Controlled	35.1	18.4	53.5	0.8	45.8	100.0
	RC Maintained	36.5	33.7	70.2	7.0	22.8	100.0
	TOTAL	35.5	23.3	58.8	2.7	38.5	100.0
Primary ^{1,2} and Preparatory Departments	Controlled	29.1	19.7	48.8	47.9	3.3	100.0
	Voluntary	68.8	0.7	69.5	30.5	0.0	100.0
	RC Maintained	30.9	27.3	58.2	40.9	0.9	100.0
	Other Maintained	20.1	37.0	57.1	40.9	2.0	100.0
	Controlled Integrated	20.5	21.7	42.2	55.6	2.2	100.0
	Grant Maintained Integrated	24.7	20.3	45.0	53.4	1.6	100.0
	TOTAL	29.9	23.3	53.2	44.7	2.1	100.0
Secondary (non grammar)	Controlled	39.3	16.7	56.0	33.0	11.0	100.0
	RC Maintained	36.8	27.5	64.3	26.2	9.5	100.0
	Other Maintained	25.8	30.7	56.5	43.5	0.0	100.0
	Controlled Integrated	17.3	14.7	32.0	37.0	31.0	100.0
	Grant Maintained Integrated	50.6	20.6	71.2	27.4	1.4	100.0
	TOTAL	38.6	22.4	60.9	29.3	9.8	100.0
Grammar	Controlled	44.6	4.3	48.9	41.5	9.6	100.0
	Voluntary	48.5	6.5	55.0	39.7	5.3	100.0
	TOTAL	47.6	6.0	53.5	40.2	6.3	100.0
Post-Primary Total		42.5	15.1	57.7	34.1	8.2	100.0
Special	Controlled	26.0	41.9	67.9	27.2	4.9	100.0
	RC Maintained	7.2	81.4	88.6	11.4	0.0	100.0
	Other Maintained	22.0	56.1	78.0	22.0	0.0	100.0
	TOTAL	25.2	43.6	68.8	26.5	4.7	100.0
All grant-aided schools	Controlled	33.4	17.9	51.2	41.7	7.1	100.0
	Voluntary	49.2	6.3	55.5	39.4	5.1	100.0
	RC Maintained	32.9	27.5	60.4	35.4	4.1	100.0
	Other Maintained	21.0	36.3	57.3	41.1	1.6	100.0
	Controlled Integrated	19.1	18.6	37.7	47.5	14.8	100.0
	Grant Maintained Integrated	40.8	20.5	61.3	37.2	1.5	100.0
	GRAND TOTAL	35.7	19.9	55.5	38.9	5.5	100.0

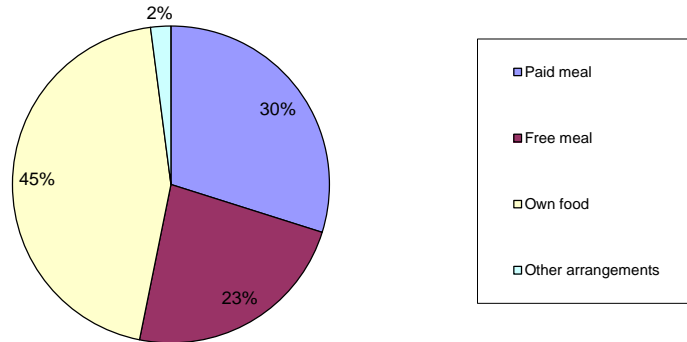
Source: Education & Library Boards and an annual survey; NI School Meals Census 2011/12 in voluntary grammar and grant maintained integrated schools.

Notes:

¹ 132 nursery pupils recorded as being present on census day were not recorded on returns as taking a meal/lunch/making other arrangements (2 Nursery Schools and 1 Primary School)

² includes pupils in reception and nursery classes of Primary schools

Figure 1a: Type of meals taken by pupils in primary¹ schools and preparatory departments, 2011



¹ Includes pupils in reception and nursery classes

Figure 1b: Type of meals taken by pupils in post-primary schools, 2011

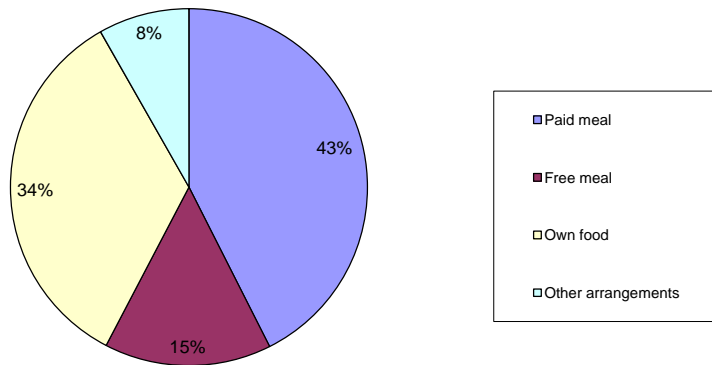


TABLE 3: NUMBER AND PERCENTAGE OF PUPILS PRESENT AND TAKING SCHOOL MEALS (FREE OR PAID FOR) BY EDUCATION AND LIBRARY BOARD, SCHOOL TYPE AND SCHOOL MANAGEMENT TYPE: 2011/12

School Type	Management Type	Belfast			Western			North Eastern			South Eastern			Southern			Total		
		Pupils taking school meal	Pupils taking school meal %		Pupils taking school meal	Pupils taking school meal %		Pupils taking school meal	Pupils taking school meal %		Pupils taking school meal	Pupils taking school meal %		Pupils taking school meal	Pupils taking school meal %		Pupils taking school meal	Pupils taking school meal %	
Nursery ¹	Controlled	414	66.2		383	67.2		193	17.7		354	73.9		497	67.7		1841	52.7	
	RC Maintained	653	82.3		-	-		22	18.3		223	54.3		227	68.6		1125	68.0	
	TOTAL	1067	75.2		383	67.2		215	17.8		577	64.8		724	68.0		2966	57.6	
Primary ^{1,2} and Preparatory Departments	Controlled	4797	52.5		5193	67.9		10091	47.8		6784	35.4		7830	55.8		34695	48.8	
	Voluntary	779	68.2		-	-		53	80.3		324	74.7		18	40.0		1174	69.5	
	RC Maintained	6525	60.0		11352	64.3		6061	55.8		4627	46.1		12692	58.9		41257	58.2	
	Other Maintained	602	61.2		278	62.2		111	33.1		112	63.3		308	58.3		1411	57.1	
	Controlled Integrated	219	50.1		23	60.5		576	48.2		470	33.7		44	48.4		1332	42.2	
	Grant Maintained Integrated	301	48.3		574	55.4		494	41.7		418	33.8		552	49.4		2339	45.0	
	TOTAL	13223	57.0		17420	65.0		17386	50.1		12735	39.2		21444	57.4		82208	53.2	
Secondary (non grammar)	Controlled	1503	52.7		2165	73.9		3771	46.6		2999	51.7		4977	63.2		15415	56.0	
	RC Maintained	3306	49.3		6638	74.9		3598	56.5		2039	50.7		8111	74.4		23692	64.3	
	Other Maintained	265	56.5		-	-		-	-		-	-		-	-		265	56.5	
	Controlled Integrated	-	-		-	-		255	31.2		312	24.6		220	58.4		787	32.0	
	Grant Maintained Integrated	1209	84.7		1248	71.7		1395	66.1		1598	67.2		658	70.9		6108	71.2	
TOTAL	6283	54.9		10051	74.3		9019	51.9		6948	51.6		13966	69.5		46267	60.9		
Grammar	Controlled	687	38.1		1492	59.1		2131	48.3		1532	46.1		1249	50.8		7091	48.9	
	Voluntary	5838	41.5		4910	59.3		4146	50.2		4046	60.3		6272	73.6		25212	55.0	
	TOTAL	6525	41.1		6402	59.2		6277	49.6		5578	55.6		7521	68.5		32303	53.5	
Post-Primary Total		12808	46.9		16453	67.6		15296	50.9		12526	53.3		21487	69.2		78570	57.7	
Special	Controlled	733	72.7		501	88.8		546	62.3		612	56.0		304	70.7		2696	67.9	
	RC Maintained	148	88.6		-	-		-	-		-	-		-	-		148	88.6	
	Other Maintained	-	-		-	-		32	78.0		-	-		-	-		32	78.0	
	TOTAL	881	75.0		501	88.8		578	63.0		612	56.0		304	70.7		2876	68.8	
All grant-aided schools	Controlled	8134	52.7		9734	68.4		16732	47.1		12281	41.1		14857	58.2		61738	51.2	
	Voluntary	6617	43.5		4910	59.3		4199	50.5		4370	61.2		6290	73.4		26386	55.5	
	RC Maintained	10632	57.4		17990	67.9		9681	55.8		6889	47.6		21030	64.2		66222	60.4	
	Other Maintained	867	59.7		278	62.2		143	38.0		112	63.3		308	58.3		1708	57.3	
	Controlled Integrated	219	50.1		23	60.5		831	41.3		782	29.4		264	56.4		2119	37.7	
	Grant Maintained Integrated	1510	73.6		1822	65.6		1889	57.3		2016	55.8		1210	59.2		8447	61.3	
GRAND TOTAL		27979	52.7		34757	66.5		33475	50.0		26450	45.7		43959	62.9		166620	55.5	

Source: Education & Library Boards and an annual survey; NI School Meals Census 2011/12 in voluntary grammar and grant maintained integrated schools.

Notes:

¹ 132 nursery pupils who were recorded as being present on census day but were not recorded on returns as taking a meal/lunch/making other arrangements have been included in this calculation (2 Nursery Schools and 1 Primary School)

² includes pupils in reception and nursery classes of Primary schools

- indicates no schools in this category

**TABLE 4: PUPILS PRESENT AND TAKING SCHOOL MEALS (FREE OR PAID FOR)
BY EDUCATION AND LIBRARY BOARD: 2010/11 - 2011/12**

		2010/11	2011/12
Pupils present on census day	Belfast	52,445	53,098
	Western	52,669	52,294
	North Eastern	67,117	66,903
	South Eastern¹	56,853	57,939
	Southern¹	68,886	69,911
	Total	297,970	300,145
Pupils taking a school meal	Belfast	27,728	27,979
	Western	34,059	34,757
	North Eastern	31,442	33,475
	South Eastern¹	24,993	26,450
	Southern¹	41,983	43,959
	Total	160,205	166,620
Percentage of pupils taking a school meal	Belfast	52.9	52.7
	Western	64.7	66.5
	North Eastern	46.8	50.0
	South Eastern¹	44.0	45.7
	Southern¹	60.9	62.9
	Total	53.8	55.5

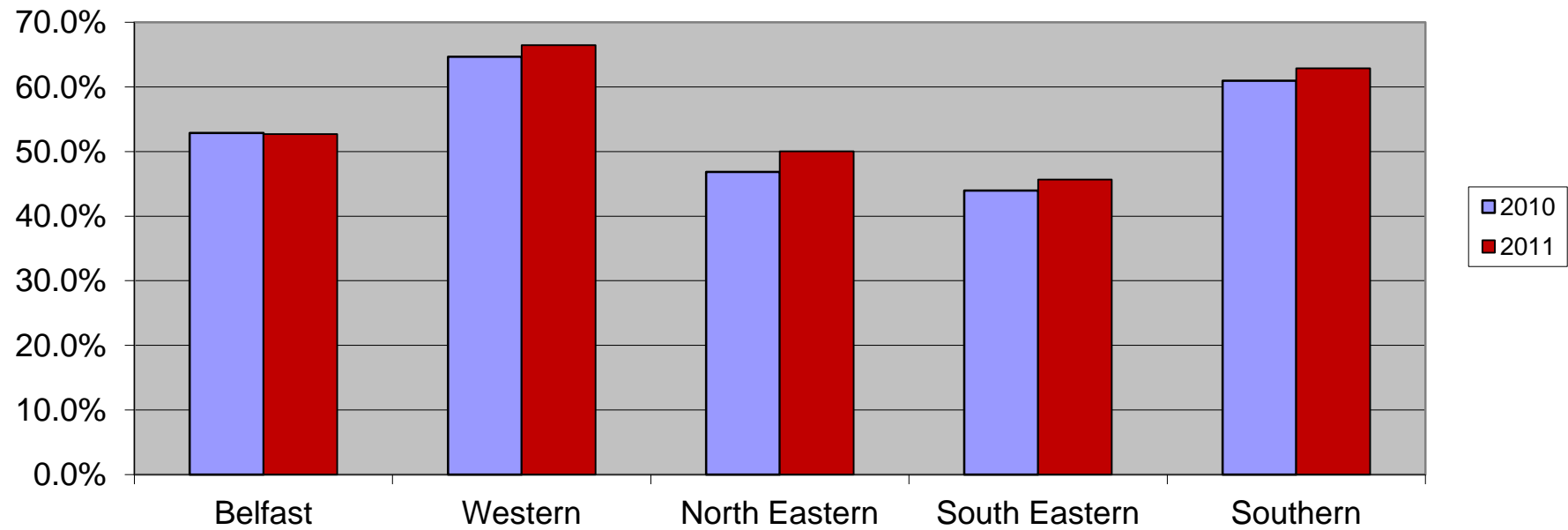
Source: Education & Library Boards and an annual survey; NI School Meals Census 2011/12 in voluntary grammar and grant maintained integrated schools.

Notes:

¹ 132 nursery pupils who were recorded as being present on census day but were not recorded on returns as taking a meal/lunch/making other arrangements have been included in this calculation (2 Nursery Schools and 1 Primary School)

² includes pupils in reception and nursery classes of Primary schools

Figure 2: Percentage of pupils present taking school meals (free or paid for), by Education and Library Board: 2010/11 - 2011/12



¹ Data taken from Table 4

TABLE 5: PERCENTAGE OF PUPILS TAKING SCHOOL MEALS (FREE OR PAID FOR) BY TYPE OF MEAL PROVISION, SCHOOL TYPE AND SCHOOL MANAGEMENT TYPE: 2011/12

School Type	Management Type	Pupils taking	
		traditional meals %	Pupils taking cash cafeteria meals %
Nursery	Controlled	100.0	0.0
	RC Maintained	100.0	0.0
	TOTAL	100.0	0.0
Primary ¹ and Preparatory Departments	Controlled	98.8	1.2
	Voluntary	88.6	11.4
	RC Maintained	99.9	0.1
	Other Maintained	100.0	0.0
	Controlled Integrated	100.0	0.0
	Grant Maintained Integrated	100.0	0.0
	TOTAL	99.3	0.7
Secondary (non grammar)	Controlled	2.2	97.8
	RC Maintained	3.9	96.1
	Other Maintained	0.0	100.0
	Controlled Integrated	0.0	100.0
	Grant Maintained Integrated	10.7	89.3
	TOTAL	4.1	95.9
Grammar	Controlled	0.0	100.0
	Voluntary	4.6	95.4
	TOTAL	3.6	96.4
Post-Primary Total		3.9	96.1
Special	Controlled	95.7	4.3
	RC Maintained	100.0	0.0
	Other Maintained	100.0	0.0
	TOTAL	96.0	4.0
All grant-aided schools	Controlled	63.2	36.8
	Voluntary	8.4	91.6
	RC Maintained	65.6	34.4
	Other Maintained	84.5	15.5
	Controlled Integrated	62.9	37.1
	Grant Maintained Integrated	35.4	64.6
	GRAND TOTAL	54.3	45.7

Source: Education & Library Boards and an annual survey; NI School Meals Census 2011/12 in voluntary grammar and grant maintained integrated schools.

Notes:

¹ includes pupils in reception and nursery classes of Primary schools

TABLE 6: NUMBER OF PUPILS TAKING SCHOOL MEALS (FREE OR PAID FOR) BY TYPE OF MEAL PROVISION, EDUCATION AND LIBRARY BOARD, SCHOOL TYPE AND SCHOOL MANAGEMENT TYPE: 2011/12

School Type	Management Type	Belfast		Western		North Eastern		South Eastern		Southern		Total	
		Pupils taking traditional meals	Pupils taking cash cafeteria meals	Pupils taking traditional meals	Pupils taking cash cafeteria meals	Pupils taking traditional meals	Pupils taking cash cafeteria meals	Pupils taking traditional meals	Pupils taking cash cafeteria meals	Pupils taking traditional meals	Pupils taking cash cafeteria meals	Pupils taking traditional meals	Pupils taking cash cafeteria meals
Nursery	Controlled	414	0	383	0	193	0	354	0	497	0	1841	0
	RC Maintained	653	0	-	-	22	0	223	0	227	0	1125	0
	TOTAL	1067	0	383	0	215	0	577	0	724	0	2966	0
Primary ¹ and Preparatory Departments	Controlled	4797	0	5193	0	9675	416	6784	0	7830	0	34279	416
	Voluntary	713	66	-	-	53	0	256	68	18	0	1040	134
	RC Maintained	6525	0	11352	0	6037	24	4627	0	12692	0	41233	24
	Other Maintained	602	0	278	0	111	0	112	0	308	0	1411	0
	Controlled Integrated	219	0	23	0	576	0	470	0	44	0	1332	0
	Grant Maintained Integrated	301	0	574	0	494	0	418	0	552	0	2339	0
	TOTAL	13157	66	17420	0	16946	440	12667	68	21444	0	81634	574
Secondary (non grammar)	Controlled	152	1351	0	2165	0	3771	0	2999	190	4787	342	15073
	RC Maintained	917	2389	0	6638	0	3598	0	2039	0	8111	917	22775
	Other Maintained	0	265	-	-	-	-	-	-	-	-	0	265
	Controlled Integrated	-	-	-	-	0	255	0	312	0	220	0	787
	Grant Maintained Integrated	293	916	0	1248	355	1040	6	1592	0	658	654	5454
	TOTAL	1362	4921	0	10051	355	8664	6	6942	190	13776	1913	44354
Grammar	Controlled	0	687	0	1492	0	2131	0	1532	0	1249	0	7091
	Voluntary	254	5584	0	4910	165	3981	379	3667	370	5902	1168	24044
	TOTAL	254	6271	0	6402	165	6112	379	5199	370	7151	1168	31135
Post-Primary Total		1616	11192	0	16453	520	14776	385	12141	560	20927	3081	75489
Special	Controlled	733	0	501	0	431	115	612	0	304	0	2581	115
	RC Maintained	148	0	-	-	-	-	-	-	-	-	148	0
	Other Maintained	-	-	-	-	32	0	-	-	-	-	32	0
	TOTAL	881	0	501	0	463	115	612	0	304	0	2761	115
All grant-aided schools	Controlled	6096	2038	6077	3657	10299	6433	7750	4531	8821	6036	39043	22695
	Voluntary	967	5650	0	4910	218	3981	635	3735	388	5902	2208	24178
	RC Maintained	8243	2389	11352	6638	6059	3622	4850	2039	12919	8111	43423	22799
	Other Maintained	602	265	278	0	143	0	112	0	308	0	1443	265
	Controlled Integrated	219	0	23	0	576	255	470	312	44	220	1332	787
	Grant Maintained Integrated	594	916	574	1248	849	1040	424	1592	552	658	2993	5454
	GRAND TOTAL	16721	11258	18304	16453	18144	15331	14241	12209	23032	20927	90442	76178

Source: Education & Library Boards and an annual survey; NI School Meals Census 2011/12 in voluntary grammar and grant maintained integrated schools.

Notes:

¹ includes pupils in reception and nursery classes of Primary schools

- indicates no schools in this category

TABLE 7: PERCENTAGE OF PUPILS PRESENT ON CENSUS DAY TAKING SCHOOL MEALS IN NORTHERN IRELAND, ENGLAND AND SCOTLAND¹:

	% of pupils taking school meals			
	Primary ⁴	Post-primary ⁵	Special	All
NI	53.2	57.7	68.8	55.5
England²	44.1	37.6	-	-
Scotland³	51.9	41.6	83.4	47.8

¹. Most recently published. NI refers to 2011/12. England and Scotland refer to 2010/11.

². Source: School Food Trust, 'Take up of school lunches in England, 2010-2011', Table 1. Published July 2011. Figures based on whole year.

³. Source: Scottish Government, 'Summary statistics for attainment, leaver destinations and school meals, No. 1: 2011 Edition', Table 9. Published June 2011. Data collected in early 2011.

⁴. The figure for Northern Ireland includes pupils in reception and nursery classes of Primary schools and pupils in preparatory departments of Grammar schools. The figure for England is based on 92.3% of all schools within all Local Authorities and includes Special schools. The figure for Scotland includes pupils attending nursery classes in Primary schools.

⁵. The figure for England is based on 63.5% of all schools including Academies and City Technical Colleges within all Local Authorities,.

TABLE 8: PERCENTAGE OF PUPILS ENTITLED TO FREE SCHOOLS MEALS BY SCHOOL TYPE¹: 2007/08 - 2011/12

		2007/08	2008/09	2009/10	2010/11	2011/12
Total enrolment	Nursery	5,855	5,869	5,857	5,906	5,911
	Primary² and Preparatory Departments	166,639	164,811	163,771	163,451	164,812
	Secondary (non grammar)	85,663	85,576	85,315	85,769	84,193
	Grammar	62,279	62,410	62,444	62,133	62,554
	All grant-aided schools (excluding special schools)	320,436	318,666	317,387	317,259	317,470
Entitlement to free school meals	Nursery	1,309	1,268	1,310	1,735	1,875
	Primary² and Preparatory Departments	29,613	28,419	30,851	35,835	44,293
	Secondary (non grammar)	21,504	20,868	21,809	22,419	22,724
	Grammar	3,663	3,521	3,954	4,150	4,422
	All grant-aided schools (excluding special schools)	56,089	54,076	57,924	64,139	73,314
Percentage of pupils entitled to free school meals³	Nursery	22.4	21.6	22.4	29.4	31.7
	Primary² and Preparatory Departments	17.8	17.2	18.8	21.9	26.9
	Secondary (non grammar)	25.1	24.4	25.6	26.1	27.0
	Grammar	5.9	5.6	6.3	6.7	7.1
	All grant-aided schools (excluding special schools)	17.5	17.0	18.3	20.2	23.1

Source: NI School Census 2007/08 - 2011/12

Notes:

¹ excludes special schools, as free school meal entitlement data is not validated

² includes pupils in reception and nursery classes of Primary schools

³ percentages express the number of pupils entitled to free school meals in a particular category (e.g. those at primary school) as a proportion of the total pupil enrolment in the same category.

TABLE 9: NUMBER OF PUPILS ENTITLED TO FREE SCHOOL MEALS BY SCHOOL TYPE¹ AND SCHOOL MANAGEMENT TYPE: 2007/08 - 2011/12

School Type	Management Type	2007/08	2008/09	2009/10	2010/11	2011/12
Nursery	Controlled	728	725	779	1,018	1,129
	RC Maintained	581	543	531	717	746
	TOTAL	1,309	1,268	1,310	1,735	1,875
Primary ² and Preparatory Departments	Controlled	11,588	10,910	11,963	14,180	17,949
	Voluntary	*	6	9	7	13
	RC Maintained	16,272	15,704	16,729	19,027	23,044
	Other Maintained	640	632	688	872	1,075
	Controlled Integrated	#	421	578	713	910
	Grant Maintained Integrated	728	746	884	1,036	1,302
	TOTAL	29,613	28,419	30,851	35,835	44,293
Secondary (non grammar)	Controlled	6,504	6,228	6,441	6,635	6,681
	RC Maintained	12,440	12,172	12,621	12,976	12,981
	Other Maintained	200	181	183	183	204
	Controlled Integrated	506	390	552	553	611
	Grant Maintained Integrated	1,854	1,897	2,012	2,072	2,247
	TOTAL	21,504	20,868	21,809	22,419	22,724
Grammar	Controlled	522	510	625	728	842
	Voluntary	3,141	3,011	3,329	3,422	3,580
	TOTAL	3,663	3,521	3,954	4,150	4,422
Post-Primary Total		25,167	24,389	25,763	26,569	27,146
All grant-aided schools (excluding special schools)	Controlled	19,342	18,373	19,808	22,561	26,601
	Voluntary	#	3,017	3,338	3,429	3,593
	RC Maintained	29,293	28,419	29,881	32,720	36,771
	Other Maintained	840	813	871	1,055	1,279
	Controlled Integrated	#	811	1,130	1,266	1,521
	Grant Maintained Integrated	2,582	2,643	2,896	3,108	3,549
	GRAND TOTAL	56,089	54,076	57,924	64,139	73,314

Source: NI School Census 2007/08 - 2011/12

Notes:

¹ excludes special schools, as free school meal entitlement data is not validated

² includes pupils in reception and nursery classes of Primary schools

* denotes fewer than 5 pupils

denotes figure ≥ 5 suppressed due to potential identification of individual pupils

TABLE 10: NUMBER AND PERCENTAGE OF PUPILS ENTITLED TO FREE SCHOOLS MEALS¹ BY EDUCATION AND LIBRARY BOARD, SCHOOL TYPE² AND SCHOOL MANAGEMENT TYPE: 2011/12

School Type	Management Type	Belfast		Western		North Eastern		South Eastern		Southern		Total	
		Pupils entitled to free school meals	Free school meal entitlement %	Pupils entitled to free school meals	Free school meal entitlement %	Pupils entitled to free school meals	Free school meal entitlement %	Pupils entitled to free school meals	Free school meal entitlement %	Pupils entitled to free school meals	Free school meal entitlement %	Pupils entitled to free school meals	Free school meal entitlement %
Nursery	Controlled	368	54.3	249	31.8	207	16.2	138	22.9	167	21.0	1129	27.3
	RC Maintained	446	53.3	-	-	31	23.8	183	43.6	86	22.1	746	42.0
	TOTAL	814	53.7	249	31.8	238	16.9	321	31.4	253	21.4	1875	31.7
Primary ³ and Preparatory Department	Controlled	4033	41.6	2294	27.6	4939	22.1	3893	18.6	2790	19.1	17949	23.7
	Voluntary	#	#	-	-	0	0.0	*	*	0	0.0	13	0.7
	RC Maintained	5176	45.5	6757	35.7	2039	17.3	2924	27.5	6148	27.0	23044	30.5
	Other Maintained	#	#	232	45.4	80	23.6	#	#	175	29.5	1075	40.6
	Controlled Integrated	184	40.2	13	31.7	285	23.0	396	26.8	32	34.8	910	27.6
	Grant Maintained Integrated	282	43.6	356	29.9	273	21.0	129	9.6	262	20.9	1302	22.7
	TOTAL	10182	41.7	9652	33.3	7616	20.5	7436	21.3	9407	23.9	44293	26.9
Secondary (non grammar)	Controlled	1224	35.7	757	23.9	2025	22.8	1445	22.3	1230	14.6	6681	22.0
	RC Maintained	3108	40.8	3688	37.1	1454	20.6	1353	29.8	3378	28.1	12981	31.5
	Other Maintained	204	37.1	-	-	-	-	-	-	-	-	204	37.1
	Controlled Integrated	-	-	-	-	212	23.2	261	18.4	138	35.9	611	22.5
	Grant Maintained Integrated	631	40.1	569	29.6	430	19.0	417	15.8	200	19.5	2247	23.9
	TOTAL	5167	39.2	5014	33.4	4121	21.6	3476	23.1	4946	22.7	22724	27.0
Grammar	Controlled	107	5.7	283	10.4	196	4.3	153	4.4	103	4.0	842	5.5
	Voluntary	1039	7.1	1002	11.8	453	5.3	233	3.4	853	9.6	3580	7.6
	TOTAL	1146	7.0	1285	11.5	649	4.9	386	3.7	956	8.4	4422	7.1
Post-Primary Total		6313	21.3	6299	24.0	4770	14.8	3862	15.2	5902	17.8	27146	18.5
All grant-aided schools (excluding special schools)	Controlled	5732	36.6	3583	23.9	7367	19.9	5629	17.9	4290	16.3	26601	21.2
	Voluntary	#	#	1002	11.8	453	5.2	#	#	853	9.6	3593	7.3
	RC Maintained	8730	44.0	10445	36.2	3524	18.6	4460	28.6	9612	27.3	36771	31.0
	Other Maintained	#	#	232	45.4	80	23.6	#	#	175	29.5	1279	40.0
	Controlled Integrated	184	40.2	13	31.7	497	23.1	657	22.7	170	35.7	1521	25.3
	Grant Maintained Integrated	913	41.1	925	29.7	703	19.7	546	13.7	462	20.2	3549	23.4
	GRAND TOTAL	17309	31.2	16200	28.9	12624	17.8	11619	18.9	15562	21.1	73314	23.1

Source: NI School Census 2011/12

Notes:

¹ percentages express the number of pupils entitled to free school meals in a particular category (e.g. those at primary school) as a proportion of the total pupil enrolment in the same category.

² excludes special schools, as free school meal entitlement data is not validated

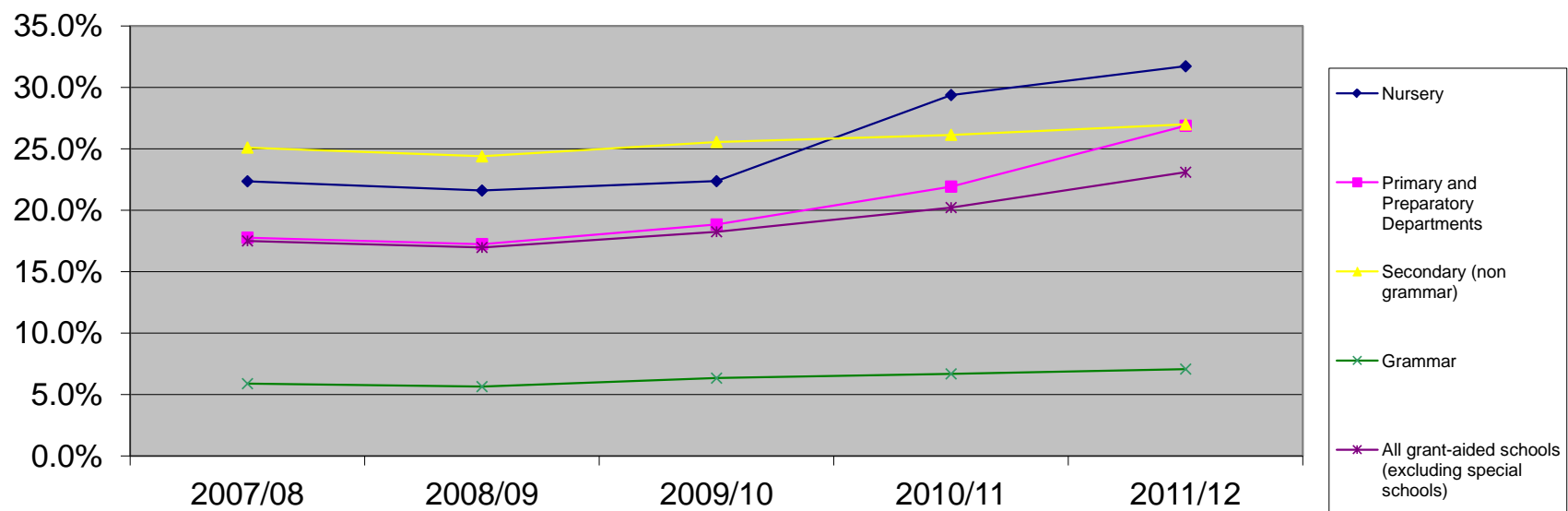
³ includes pupils in reception and nursery classes of Primary schools

- indicates no schools in this category

* denotes fewer than 5 pupils

denotes figure >=5 suppressed due to potential identification of individual pupils

Figure 3: Percentage of pupils entitled to free school meals, 2007/08 - 2011/12



¹ Excludes special schools, as free school meal entitlement data is not validated

² Primary includes pupils in reception and nursery classes

³ Data taken from Table 8

TABLE 11: NUMBER AND PERCENTAGE OF PUPILS TAKING FREE SCHOOL MEALS AS A PROPORTION OF ALL SCHOOL MEALS TAKEN BY EDUCATION AND LIBRARY BOARD, SCHOOL TYPE AND SCHOOL MANAGEMENT TYPE: 2011/12

School Type	Management Type	Belfast		Western		North Eastern		South Eastern		Southern		Total	
		Pupils present and taking free school meals	Free meals as a proportion of all school meals taken %	Pupils present and taking free school meals	Free meals as a proportion of all school meals taken %	Pupils present and taking free school meals	Free meals as a proportion of all school meals taken %	Pupils present and taking free school meals	Free meals as a proportion of all school meals taken %	Pupils present and taking free school meals	Free meals as a proportion of all school meals taken %	Pupils present and taking free school meals	Free meals as a proportion of all school meals taken %
Nursery	Controlled	208	50.2	181	47.3	62	32.1	98	27.7	85	17.1	634	34.4
	RC Maintained	346	53.0	-	-	5	22.7	135	60.5	54	23.8	540	48.0
	TOTAL	554	51.9	181	47.3	67	31.2	233	40.4	139	19.2	1174	39.6
Primary ² and Preparatory Department	Controlled	3020	63.0	1997	38.5	4025	39.9	2719	40.1	2245	28.7	14006	40.4
	Voluntary	#	#	-	-	0	0.0	*	*	0	0.0	12	1.0
	RC Maintained	4561	69.9	5709	50.3	1775	29.3	2303	49.8	4995	39.4	19343	46.9
	Other Maintained	#	#	195	70.1	69	62.2	#	#	146	47.4	915	64.8
	Controlled Integrated	137	62.6	12	52.2	253	43.9	260	55.3	22	50.0	684	51.4
	Grant Maintained Integrated	216	71.8	298	51.9	241	48.8	104	24.9	198	35.9	1057	45.2
TOTAL	8378	63.4	8211	47.1	6363	36.6	5459	42.9	7606	35.5	36017	43.8	
Secondary (non grammar)	Controlled	731	48.6	650	30.0	1388	36.8	966	32.2	865	17.4	4600	29.8
	RC Maintained	2271	68.7	3126	47.1	1188	33.0	942	46.2	2599	32.0	10126	42.7
	Other Maintained	144	54.3	-	-	-	-	-	-	-	-	144	54.3
	Controlled Integrated	-	-	-	-	92	36.1	144	46.2	125	56.8	361	45.9
	Grant Maintained Integrated	555	45.9	458	36.7	310	22.2	308	19.3	136	20.7	1767	28.9
TOTAL	3701	58.9	4234	42.1	2978	33.0	2360	34.0	3725	26.7	16998	36.7	
Grammar	Controlled	89	13.0	252	16.9	147	6.9	89	5.8	46	3.7	623	8.8
	Voluntary	807	13.8	923	18.8	370	8.9	186	4.6	704	11.2	2990	11.9
	TOTAL	896	13.7	1175	18.4	517	8.2	275	4.9	750	10.0	3613	11.2
Post-Primary Total	4597	35.9	5409	32.9	3495	22.8	2635	21.0	4475	20.8	20611	26.2	
Special	Controlled	511	69.7	401	80.0	281	51.5	332	54.2	138	45.4	1663	61.7
	RC Maintained	136	91.9	-	-	-	-	-	-	-	-	136	91.9
	Other Maintained	-	-	-	-	23	71.9	-	-	-	-	23	71.9
	TOTAL	647	73.4	401	80.0	304	52.6	332	54.2	138	45.4	1822	63.4
All grant-aided schools	Controlled	4559	56.0	3481	35.8	5903	35.3	4204	34.2	3379	22.7	21526	34.9
	Voluntary	#	#	923	18.8	370	8.8	#	#	704	11.2	3002	11.4
	RC Maintained	7314	68.8	8835	49.1	2968	30.7	3380	49.1	7648	36.4	30145	45.5
	Other Maintained	#	#	195	70.1	92	64.3	#	#	146	47.4	1082	63.3
	Controlled Integrated	137	62.6	12	52.2	345	41.5	404	51.7	147	55.7	1045	49.3
	Grant Maintained Integrated	771	51.1	756	41.5	551	29.2	412	20.4	334	27.6	2824	33.4
GRAND TOTAL	14176	50.7	14202	40.9	10229	30.6	8659	32.7	12358	28.1	59624	35.8	

Source: Education & Library Boards and an annual survey; NI School Meals Census 2011/12 in voluntary grammar and grant maintained integrated schools.

Notes:

¹ percentages express the number of pupils taking free school meals in a particular category (e.g. those at primary school) as a proportion of the pupils present and taking meals in the same category.

² includes pupils in reception and nursery classes of Primary schools

- indicates no schools in this category

* denotes fewer than 5 pupils

denotes figure >=5 suppressed due to potential identification of individual pupils

TABLE 12: NUMBER OF PUPILS TAKING FREE SCHOOL MEALS AS A PROPORTION OF PUPILS ENTITLED TO FREE SCHOOLS MEALS BY SCHOOL TYPE¹: 2007/08 - 2011/12

		2007/08	2008/09	2009/10	2010/11	2011/12
Pupils present and taking free school meals	Nursery	703	716	751	956	1,174
	Primary² and Preparatory Departments	24,422	23,767	25,035	29,598	36,017
	Secondary (non grammar)	16,107	15,285	16,204	16,958	16,998
	Grammar	3,011	2,879	3,147	3,357	3,613
	All grant-aided schools (excluding special schools)	44,243	42,647	45,137	50,869	57,802
Entitlement to free school meals	Nursery	1,309	1,268	1,310	1,735	1,875
	Primary² and Preparatory Departments	29,613	28,419	30,851	35,835	44,293
	Secondary (non grammar)	21,504	20,868	21,809	22,419	22,724
	Grammar	3,663	3,521	3,954	4,150	4,422
	All grant-aided schools (excluding special schools)	56,089	54,076	57,924	64,139	73,314
Percentage³ of pupils taking free meals as a proportion of entitlement	Nursery	53.7	56.5	57.3	55.1	62.6
	Primary and Preparatory Departments	82.5	83.6	81.1	82.6	81.3
	Secondary (non grammar)	74.9	73.2	74.3	75.6	74.8
	Grammar	82.2	81.8	79.6	80.9	81.7
	All grant-aided schools (excluding special schools)	78.9	78.9	77.9	79.3	78.8

Entitlement Source: NI School Census 2007/08 - 2011/12

Uptake Source: Education & Library Boards and an annual survey; NI School Meals Census 2011/12 in voluntary grammar and grant maintained integrated schools.

Notes:

¹ excludes special schools, as free school meal entitlement data is not validated

² includes pupils in reception and nursery classes of Primary schools

³ percentages express the number of pupils taking to free school meals in a particular category (e.g. those at primary school) as a proportion of the pupils entitled to free school meals in the same category.

TABLE 13: NUMBER AND PERCENTAGE OF PUPILS TAKING FREE SCHOOLS MEALS AS A PROPORTION OF PUPILS ENTITLED TO FREE SCHOOL MEALS BY EDUCATION AND LIBRARY BOARD, SCHOOL TYPE¹ AND SCHOOL MANAGEMENT TYPE: 2011/12

School Type	Management Type	Belfast		Western		North Eastern		South Eastern		Southern		Total	
		Pupils present and taking free school meals	Free meals taken as a proportion of entitlement %	Pupils present and taking free school meals	Free meals taken as a proportion of entitlement %	Pupils present and taking free school meals	Free meals taken as a proportion of entitlement %	Pupils present and taking free school meals	Free meals taken as a proportion of entitlement %	Pupils present and taking free school meals	Free meals taken as a proportion of entitlement %	Pupils present and taking free school meals	Free meals taken as a proportion of entitlement %
Nursery	Controlled	208	56.5	181	72.7	62	30.0	98	71.0	85	50.9	634	56.2
	RC Maintained	346	77.6	-	-	5	16.1	135	73.8	54	62.8	540	72.4
	TOTAL	554	68.1	181	72.7	67	28.2	233	72.6	139	54.9	1174	62.6
Primary ³ and Preparatory Department	Controlled	3020	74.9	1997	87.1	4025	81.5	2719	69.8	2245	80.5	14006	78.0
	Voluntary	#	#	-	-	0	0.0	*	*	0	0.0	12	92.3
	RC Maintained	4561	88.1	5709	84.5	1775	87.1	2303	78.8	4995	81.2	19343	83.9
	Other Maintained	#	#	195	84.1	69	86.3	#	#	146	83.4	915	85.1
	Controlled Integrated	137	74.5	12	92.3	253	88.8	260	65.7	22	68.8	684	75.2
	Grant Maintained Integrated	216	76.6	298	83.7	241	88.3	104	80.6	198	75.6	1057	81.2
	TOTAL	8378	82.3	8211	85.1	6363	83.5	5459	73.4	7606	80.9	36017	81.3
Secondary (non grammar)	Controlled	731	59.7	650	85.9	1388	68.5	966	66.9	865	70.3	4600	68.9
	RC Maintained	2271	73.1	3126	84.8	1188	81.7	942	69.6	2599	76.9	10126	78.0
	Other Maintained	144	70.6	-	-	-	-	-	-	-	-	144	70.6
	Controlled Integrated	-	-	-	-	92	43.4	144	55.2	125	90.6	361	59.1
	Grant Maintained Integrated	555	88.0	458	80.5	310	72.1	308	73.9	136	68.0	1767	78.6
	TOTAL	3701	71.6	4234	84.4	2978	72.3	2360	67.9	3725	75.3	16998	74.8
Grammar	Controlled	89	83.2	252	89.0	147	75.0	89	58.2	46	44.7	623	74.0
	Voluntary	807	77.7	923	92.1	370	81.7	186	79.8	704	82.5	2990	83.5
	TOTAL	896	78.2	1175	91.4	517	79.7	275	71.2	750	78.5	3613	81.7
Post-Primary Total		4597	72.8	5409	85.9	3495	73.3	2635	68.2	4475	75.8	20611	75.9
All grant-aided schools (excluding special schools)	Controlled	4048	70.6	3080	86.0	5622	76.3	3872	68.8	3241	75.5	19863	74.7
	Voluntary	#	#	923	92.1	370	81.7	#	#	704	82.5	3002	83.6
	RC Maintained	7178	82.2	8835	84.6	2968	84.2	3380	75.8	7648	79.6	30009	81.6
	Other Maintained	#	#	195	84.1	69	86.3	#	#	146	83.4	1059	82.8
	Controlled Integrated	137	74.5	12	92.3	345	69.4	404	61.5	147	86.5	1045	68.7
	Grant Maintained Integrated	771	84.4	756	81.7	551	78.4	412	75.5	334	72.3	2824	79.6
	GRAND TOTAL		13529	78.2	13801	85.2	9925	78.6	8327	71.7	12220	78.5	57802

Entitlement Source: NI School Census 2011/12

Uptake Source: Education & Library Boards and an annual survey; NI School Meals Census 2011/12 in voluntary grammar and grant maintained integrated schools.

Notes:

¹ excludes special schools, as free school meal entitlement data is not validated

² percentages express the number of pupils taking free school meals in a particular category (e.g. those at primary school) as a proportion of the pupils entitled to free school meals in the same category.

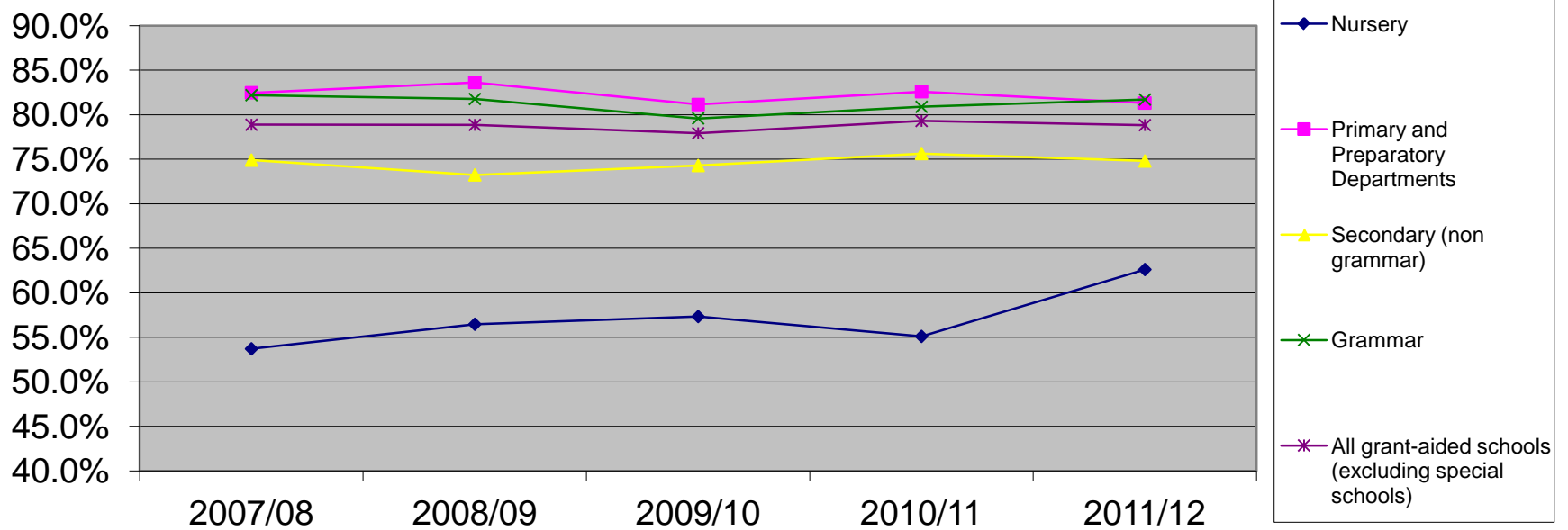
³ includes pupils in reception and nursery classes of Primary schools

- indicates no schools in this category

* denotes fewer than 5 pupils

denotes figure >=5 suppressed due to potential identification of individual pupils

Figure 4: Pupils taking free meals as a proportion of pupils entitled to free school meals: 2007/08 - 2011/12



¹ Excludes special schools, as free school meal entitlement data is not validated

² Primary includes pupils in reception and nursery classes

³ Data taken from Table 12

TABLE 14: NUMBER OF PUPILS TAKING OWN FOOD OR MAKING OTHER LUNCH ARRANGEMENTS BY EDUCATION AND LIBRARY BOARD, SCHOOL TYPE AND SCHOOL MANAGEMENT TYPE: 2011/12

School Type	Management Type	Belfast		Western		North Eastern		South Eastern		Southern		Total	
		Pupils taking own food	Pupils making other lunch arrangements	Pupils taking own food	Pupils making other lunch arrangements	Pupils taking own food	Pupils making other lunch arrangements	Pupils taking own food	Pupils making other lunch arrangements	Pupils taking own food	Pupils making other lunch arrangements	Pupils taking own food	Pupils making other lunch arrangements
Nursery	Controlled	*	209	*	185	10	885	10	61	*	235	26	1575
	RC Maintained	11	129	-	-	65	33	36	100	0	104	112	366
	TOTAL	#	338	*	185	75	918	46	161	*	339	138	1941
Primary ¹ and Preparatory Department	Controlled	3532	816	2349	110	10536	470	11806	595	5851	325	34074	2316
	Voluntary	364	0	-	-	13	0	110	0	27	0	514	0
	RC Maintained	4175	166	6091	203	4784	10	5315	#	8655	#	29020	671
	Other Maintained	333	49	169	0	224	0	65	0	220	0	1011	49
	Controlled Integrated	157	61	15	0	613	#	924	0	46	*	1755	68
	Grant Maintained Integrated	271	51	463	0	690	*	789	#	565	0	2778	82
	TOTAL	8832	1143	9087	313	16860	487	19009	721	15364	522	69152	3186
Secondary (non grammar)	Controlled	889	458	472	291	3272	1044	2557	241	1892	1009	9082	3043
	RC Maintained	2832	562	788	1440	1756	1017	1682	300	2612	176	9670	3495
	Other Maintained	204	0	-	-	-	-	-	-	-	-	204	0
	Controlled Integrated	-	-	-	-	518	44	383	573	10	147	911	764
	Grant Maintained Integrated	219	0	492	0	714	0	779	0	147	123	2351	123
TOTAL	4144	1020	1752	1731	6260	2105	5401	1114	4661	1455	22218	7425	
Grammar	Controlled	1064	50	698	335	1959	318	1368	421	940	269	6029	1393
	Voluntary	6897	1324	2744	627	3732	375	2611	50	2214	34	18198	2410
	TOTAL	7961	1374	3442	962	5691	693	3979	471	3154	303	24227	3803
Post-Primary Total	12105	2394	5194	2693	11951	2798	9380	1585	7815	1758	46445	11228	
Special	Controlled	#	7	#	16	298	32	403	78	#	62	1080	195
	RC Maintained	19	0	-	-	-	-	-	-	-	-	19	0
	Other Maintained	-	-	-	-	9	0	-	-	-	-	9	0
	TOTAL	#	7	#	16	307	32	403	78	#	62	1108	195
All grant-aided schools	Controlled	5755	1540	3568	937	16075	2749	16144	1396	8749	1900	50291	8522
	Voluntary	7261	1324	2744	627	3745	375	2721	50	2241	34	18712	2410
	RC Maintained	7037	857	6879	1643	6605	1060	7033	#	11267	#	38821	4532
	Other Maintained	537	49	169	0	233	0	65	0	220	0	1224	49
	Controlled Integrated	157	61	15	0	1131	#	1307	573	56	#	2666	832
	Grant Maintained Integrated	490	51	955	0	1404	*	1568	#	712	123	5129	205
GRAND TOTAL	21237	3882	14330	3207	29193	4235	28838	2545	23245	2681	116843	16550	

Source: Education & Library Boards and an annual survey; NI School Meals Census 2011/12 in voluntary grammar and grant maintained integrated schools.

Notes:

¹ includes pupils in reception and nursery classes of Primary schools

- indicates no schools in this category

* denotes fewer than 5 pupils

denotes figure >=5 suppressed due to potential identification of individual pupils

TABLE 15: ADULTS TAKING SCHOOL MEALS BY EDUCATION AND LIBRARY BOARD AND SCHOOL TYPE: 2011/12

School Type	Belfast		Western		North Eastern		South Eastern		Southern		Total	
	Adults taking school meal (free or paid for)	Adults taking free school meal %	Adults taking school meal (free or paid for)	Adults taking free school meal %	Adults taking school meal (free or paid for)	Adults taking free school meal %	Adults taking school meal (free or paid for)	Adults taking free school meal %	Adults taking school meal (free or paid for)	Adults taking free school meal %	Adults taking school meal (free or paid for)	Adults taking free school meal %
Nursery	97	100.0	47	100.0	26	100.0	37	94.9	83	95.4	290	98.0
Primary ¹ and Preparatory Departments	766	96.0	1176	88.5	1408	91.4	861	92.7	1503	87.8	5714	90.6
Secondary (non grammar)	365	84.1	503	73.8	514	79.6	384	75.1	641	89.5	2407	80.5
Grammar	204	54.5	242	70.6	244	64.4	195	59.5	246	65.8	1131	62.9
Post-Primary Total	569	70.4	745	72.7	758	74.0	579	69.0	887	81.4	3538	73.9
Special	139	97.9	249	100.0	93	93.0	52	100.0	31	100.0	564	98.3
All grant-aided schools	1571	85.1	2217	83.7	2285	84.9	1529	82.2	2504	85.8	10106	84.5

Source: Education & Library Boards and an annual survey; NI School Meals Census 2011/12 in voluntary grammar and grant maintained integrated schools.

Notes:

¹ includes adults working in reception and nursery classes in Primary schools