

DEPARTMENT OF EDUCATION



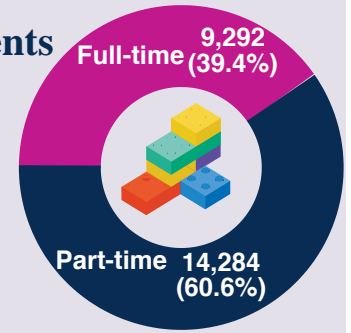
KEY STATISTICS



Pre-Schools

No. of Establishments Enrolments

A	Voluntary & Private Pre-Schools	386	8,022
B	Nursery Schools	95	5,832
C	Schools with nursery classes	245	9,554
	Schools with reception classes	44	168



Source: 2018/19 School Census

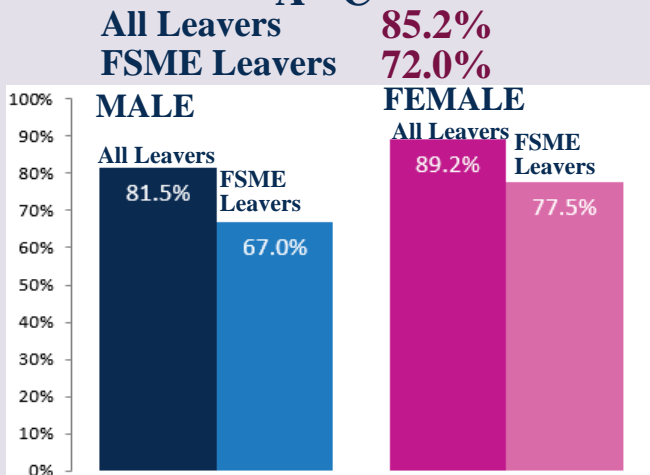


No. of Schools Enrolments Entitled to Free School Meals

Primary (Y1-Y7)	813	174,523	29.5%
Grammar	66	62,862	14.1%
Non-Grammar	130	79,377	39.2%
Special Schools	39	5,959	52.0%

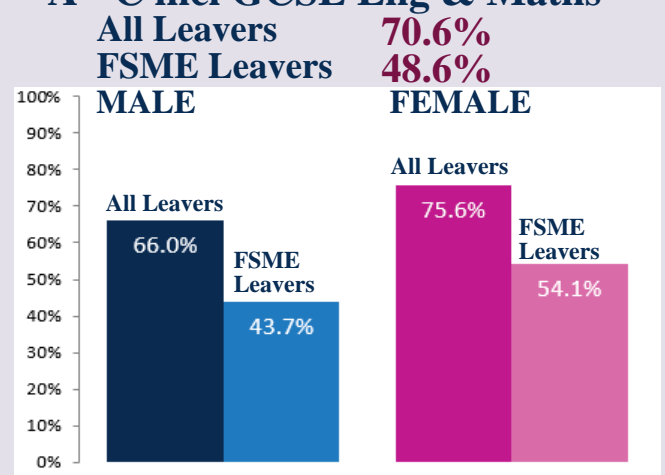
Source: 2018/19 School Census

School Leavers achieving 5+ GCSEs A*-C¹



¹ Including Equivalents

School Leavers achieving 5+ GCSEs A*-C¹ incl GCSE Eng & Maths



Source: 2017/18 School Leavers Data

Pupil Attendance



Primary Schools: 94.9% of half days attended

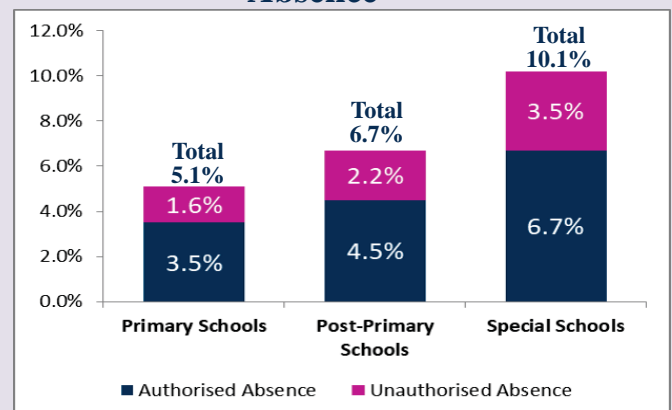
Post-Primary Schools: 93.3% of half days attended

Special Schools: 89.9% of half days attended

Examples of authorised absence include:
Bereavement, Suspension, Illness, Medical Appointments

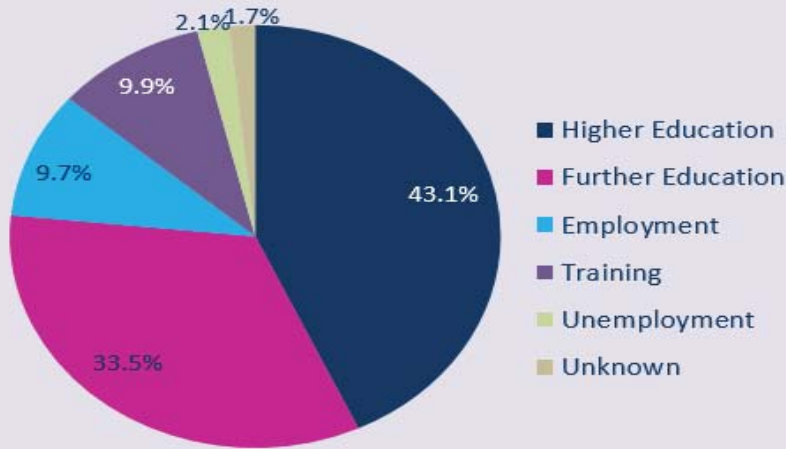
Examples of unauthorised absence include:
Family holiday not agreed, other absence not covered by another code, reason not acceptable to school, no reason provided, late (arrive after registration)

Absence



Source: 2017/18 Attendance Statistical Bulletin

Destinations of School Leavers



Overall, 96.2% of school leavers were recorded by their school as entering Education, Employment or Training.

Source: 2017/18 School Leavers Data

School Meals Uptake

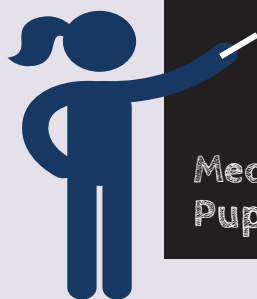


🍏 99,142 pupils across all school types were entitled to Free School Meals (FSM); this represents 29.3% of all pupils

🍏 80.9% of those entitled to FSM availed of them on the day of the School Meals Census

Source: 2018/19 School Meals (Uptake) Census

Teacher Workforce



18,338.4 Full Time Equivalent (FTE) Teachers

Teacher Headcount -

19,764

Gender	Count	Percentage
Male	4,532	(22.9%)
Female	15,232	(77.1%)

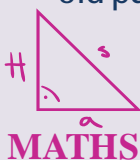
Median Age of Teachers - 41.7

Pupil:Teacher Ratio 18.3

Source: 2018/19 Teacher Workforce Statistics in Grant Aided Schools

International Research

Programme for International Student Assessment (PISA) - PISA focuses on the ability of 15 year old pupils to use their knowledge and skills to meet real-life challenges



NI was not statistically different from the OECD average

18 countries where the mean maths score was at least a quarter of a year of schooling ahead of NI, and 36 countries where the mean maths score was at least a quarter of a year of schooling behind NI

NI was not statistically different from the OECD average

12 countries where the mean reading score was at least a quarter of a year of schooling ahead of NI, and 39 countries where it was at least a quarter of a year of schooling behind NI (significant in 37)

NI was not statistically different from the OECD average

14 countries where the mean science score was at least a third of a year of schooling ahead of NI, and 38 countries where the mean science score is at least a third of a year of schooling behind NI

Significant refers to statistical significance

Source: PISA Survey 2015