

## Free school meal entitlement

18.9%  
18.5%  
17.4%

18.5%

2009/10

2013/14

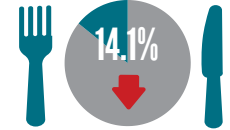
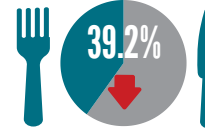
2018/19

29.5% ↓ 0.9% 51,541 primary (yr 1-7) pupils  
29.3% ↓ 0.6% 94,569 total pupils<sup>^</sup>  
28.1% ↓ 0.2% 39,928 post-primary pupils

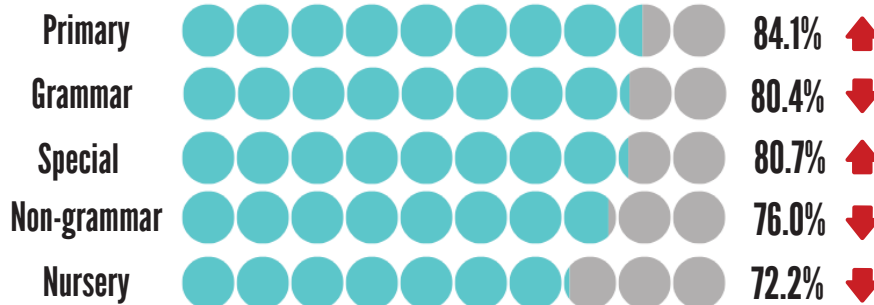
<sup>^</sup> primary years 1-7, post-primary, and special school pupils

Non-grammar

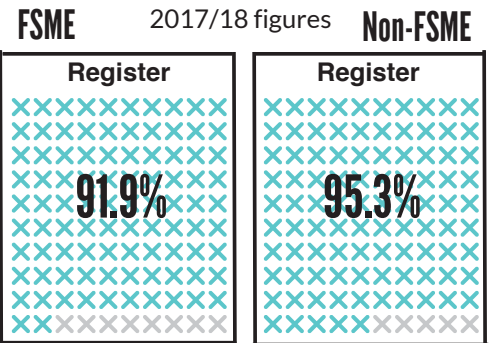
Grammar



## Uptake of free school meals

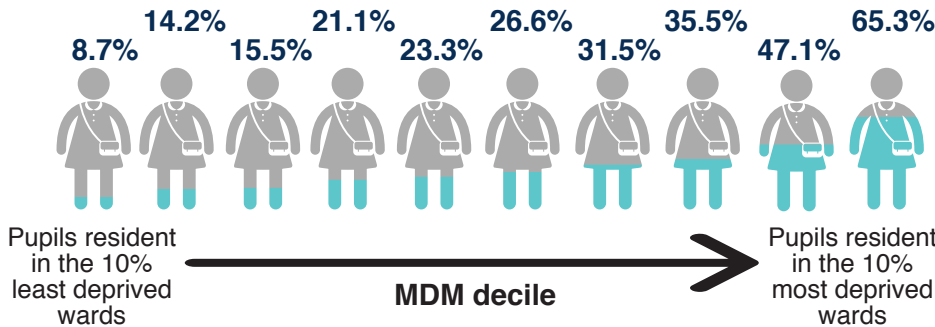


## Attendance

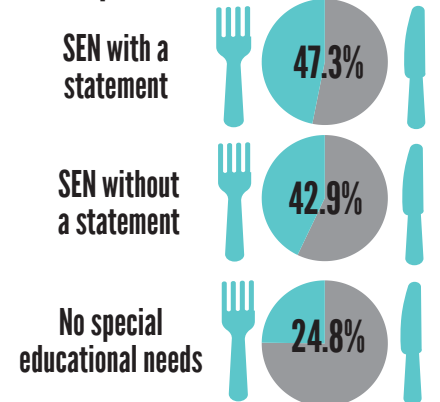


## Free school meal entitlement has strong links to deprivation

% pupils entitled to free school meals

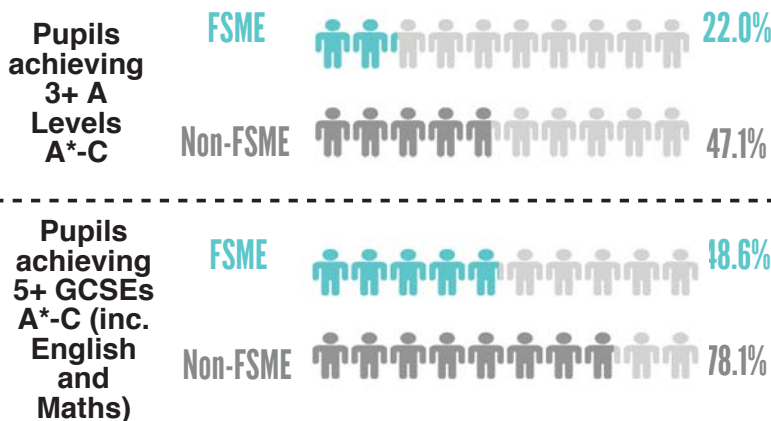


## Special educational needs



## Performance of free school meal entitled pupils

2017/18 figures



## School leavers' destinations - FSME

2017/18 figures

